

LESSON 1

Student Sheet

Should Ecotourism Be Allowed in Churchill?

Investigating Our Issue

PHOTO © R. & C. BUCHANAN.



Task



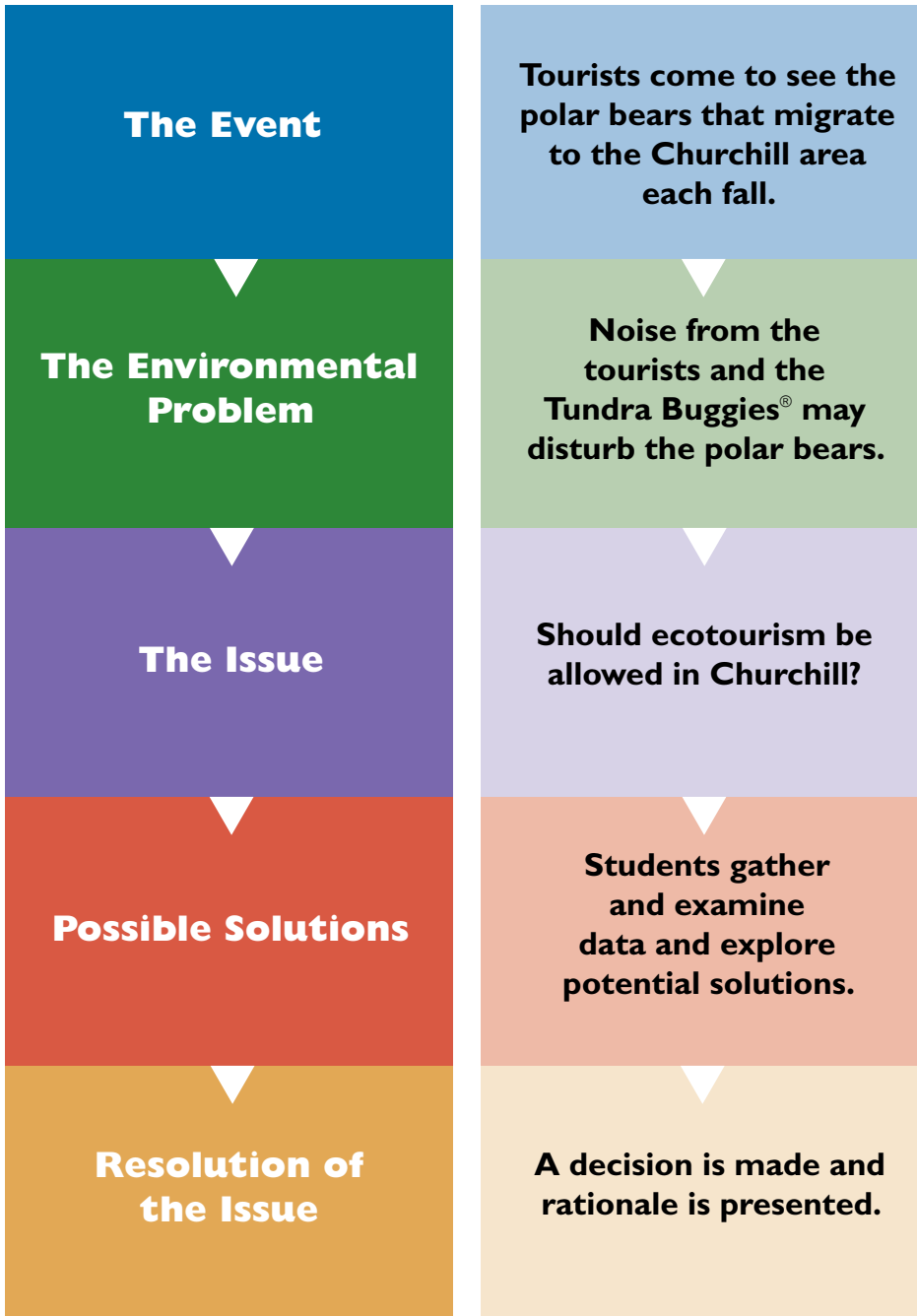
You will have an important decision to make with your classmates

at the end of this unit. Your decision will affect the future of the residents, tourists and wildlife in Churchill, Manitoba, Canada, "The Polar Bear Capital of the World." In order to better understand the decision that your group will have to make, you will need to understand several things about Churchill. The following activities will help you organize your thoughts and ideas as you work with your group to make a decision.




¹ *Investigating and Evaluating Environmental Issues and Actions (2003)*; Hungerford, Harold R.; Volk, Trudi L.; Ramsey, John M.; Litherland, Ralph A.; Peyton, Ben R.; Stipes Publishing L.L.C., Champaign, Illinois.

IEEIA Lesson Sequence¹



Make recommendations to the Churchill City Council about:

- a. Whether Tundra Buggies® should be allowed for tourism.
- b. If allowed, how close can the buggies get to the bears?
- c. Are there any other rules you would recommend?
- d. Explain how you used the data to come to your decisions.
- e. Support your decisions with data and specific information from the experiments and from your observations.

¹ *Investigating and Evaluating Environmental Issues and Actions (2003)*; Hungerford, Harold R.; Volk, Trudi L.; Ramsey, John M.; Litherland, Ralph A.; Peyton, Ben R.; Stipes Publishing L.L.C., Champaign, Illinois.